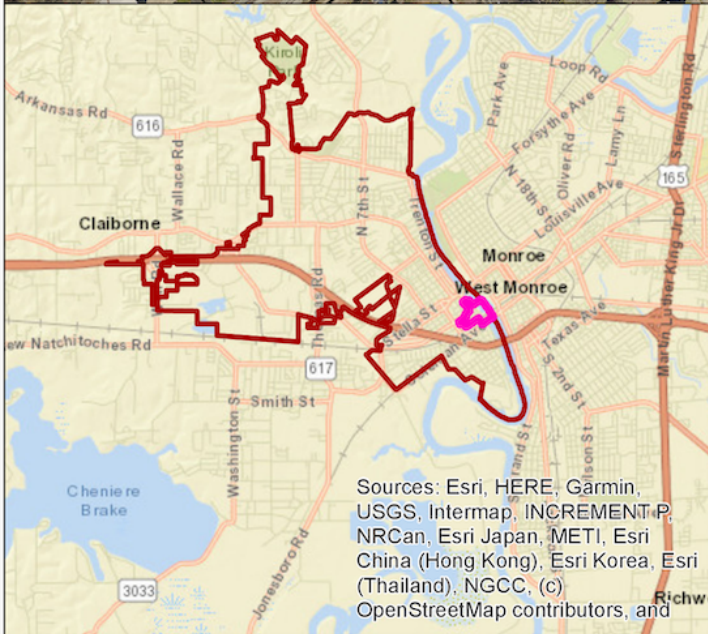
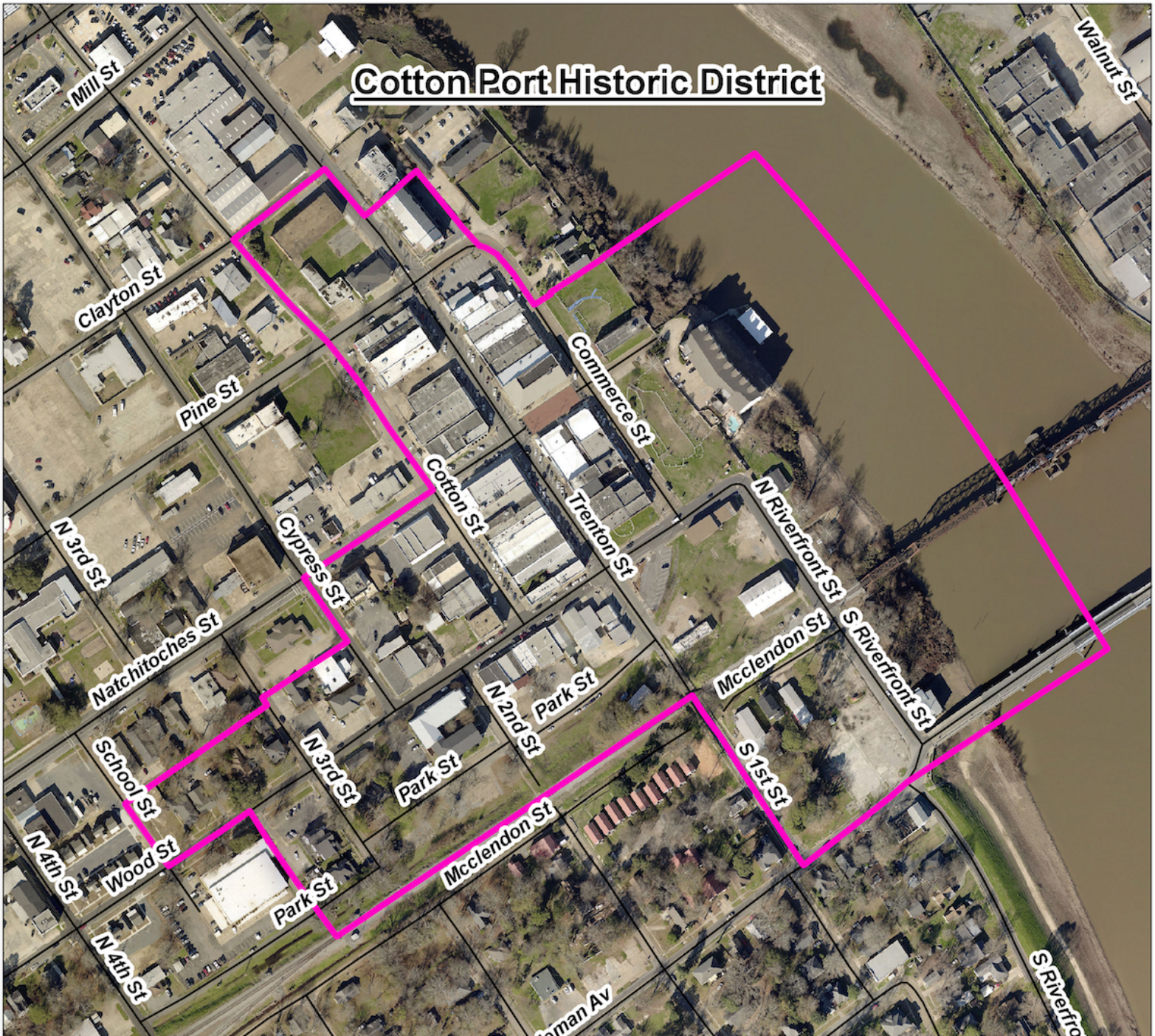


# Cotton Port Historic District



Sources: Esri, HERE, Garmin, USGS, Intermap, INCREMENT P, NRCan, Esri Japan, METI, Esri China (Hong Kong), Esri Korea, Esri (Thailand), NGCC, (c) OpenStreetMap contributors, and

Cotton Port Historic District

**West Monroe**  
LOUISIANA

City of West Monroe. This is not a survey product. This map is provided for general information purposes only. The data depicted herein serve only as duplicates or copies of the original source data, and do not take the place of a legal land survey or other original source documentation. The City of West Monroe does not warrant its accuracy, completeness, or suitability for any purpose.

GIS Admin: L. Snipe 03/23/21

